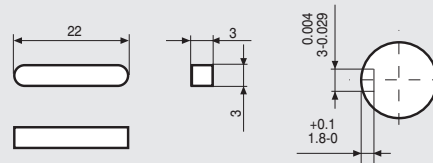


WIRES ARE HOUSED IN A VINYL TUBE.
T IS THE EARTH TERMINAL.

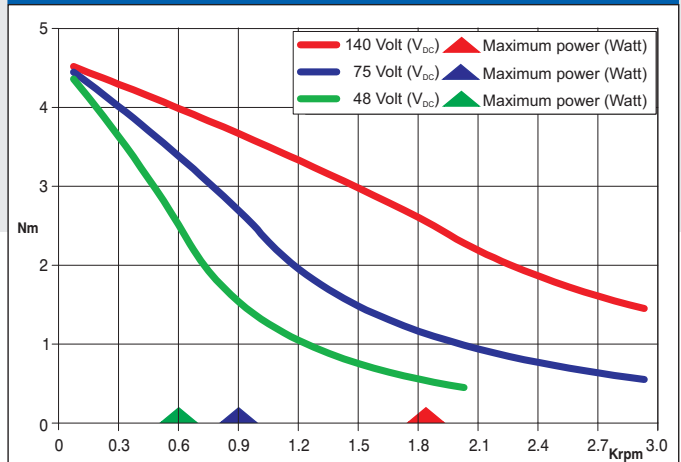


Dimensions in mm.

FEATURES
CARATTERISTICHE

MODEL MODELLO	103 - 845 - 67S1
BASIC STEP ANGLE	1.8° ± 0.09°
BIPOLAR CURRENT (Amp)	9.5 (*)
UNIPOLAR CURRENT (Amp)	6.7
RESISTANCE (Ohm)	0.45
INDUCTANCE (mH)	2.0
BIPOLAR HOLDING TORQUE (Ncm)	510
UNIPOLAR HOLDING TORQUE (Ncm)	410
ROTOR INERTIA (Kgm ² x 10 ⁻⁷)	1550
THEORETICAL ACCELERATION (rad x sec. ⁻²)	32900
BACK E.M.F. (V/Krpm)	46
MASS (Kg)	3.6
PROTECTION DEGREE	IP55
LEADS CODE	II

TORQUE/SPEED CURVE
CURVA DI COPPIA/VELOCITÀ



(*) Bipolar parallel connection.
(*) Collegamento bipolare parallelo.

