

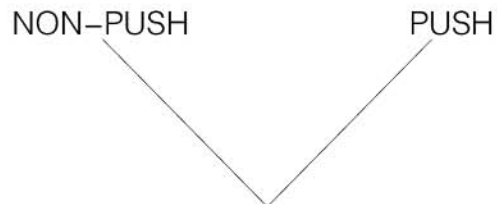


PUSH BUTTON SWITCH

KPB25 Series**CLASSIFICATION**KPB-25 W M - R 1 1

① ② ③ ④ ⑤

| | | |
|--------------|--------|---|
| ① PROTECTION | NONE | IP40 |
| | W | IP65 |
| ② ACTUATOR | M | PUSH BUTTON, MOMENTARY |
| | MS | SELECTABLE PUSH BUTTON |
| | ML | SELECTABLE PUSH BUTTON |
| | AT | PUSH BUTTON, MAINTAINED |
| | EM | MUSHROOM HEADED PUSH BUTTON, MOMENTARY |
| | EA | MUSHROOM HEADED PUSH BUTTON, MAINTAINED |
| | ER | PUSH BUTTON, TURN TO RESET |
| | EP | PUSH BUTTON, PULL TO RESET |
| ③ COLOR | R | RED |
| | G | GREEN |
| | Y | YELLOW |
| | B | BLUE |
| | W | WHITE |
| | BK | BLACK |
| ④ CONTACTS | NUMBER | NUMBER OF NO CONTACT |
| ⑤ CONTACTS | NUMBER | NUMBER OF NC CONTACT |

KPB25MS**KPB25ML**

CONTROL COMPONENT



KPB25M
KPB25WM
KPB25AT
KPB25WAT



KPB25EM
KPB25WEM
KPB25EA
KPB25WEA



KPB25ER
KPB25WER



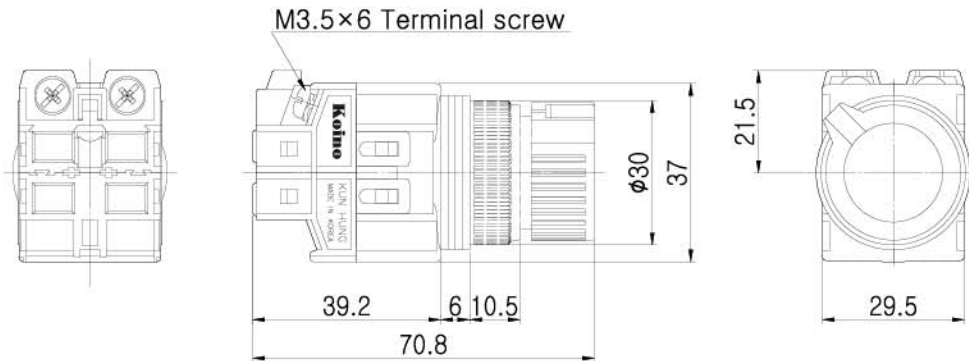
KPB25EP
KPB25WEP



KPB25MS
KPB25ML



KPB25MS, KPB25ML



CONTROL COMPONENTS

SQUARE LIGHT

TOWER LIGHT

MICRO SWITCH

FOOT SWITCH

LIMIT SWITCH

POWER SWITCH

HOIST SWITCH

CAM SWITCH

BUZZER

PHOTO SENSOR

PROXIMITY SENSOR

FLOATLESS LEVEL SWITCH

TIMER & COUNTER

RELAY

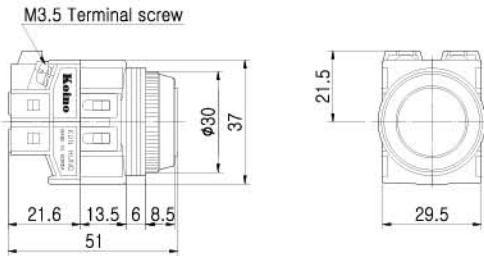
SOCKETS

TERMINAL BLOCK

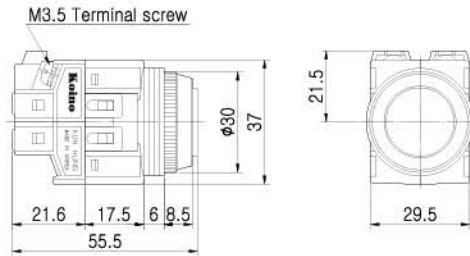
CONTROL BOX

PID TEMP. CONTROLLER

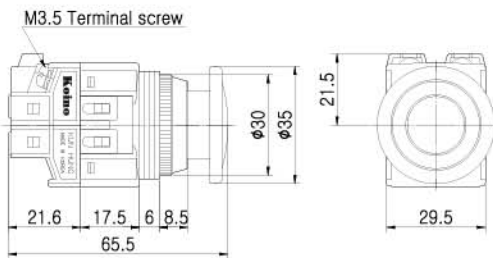
KPB25M, KPB25WM



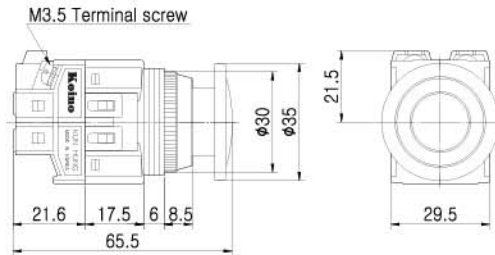
KPB25AT, KPB25WAT



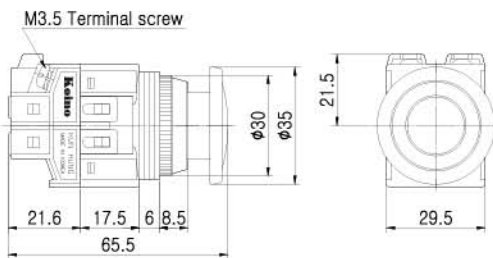
KPB25EP, KPB25WEP



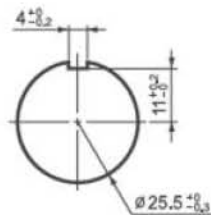
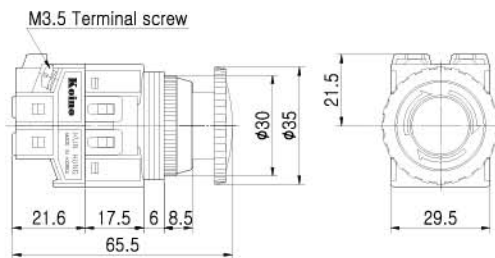
KPB25EM, KPB25WEM



KPB25EA, KPB25WEA



KPB25ER, KPB25WER



PANEL CUT-OUT



DISASSEMBLING KPB25MS/ML

| | |
|---|--|
|  | <p>1. Insert screw driver between knob and indicator</p> |
|  | <p>2. Release lock by lifting indicator</p> |
|  | <p>3. Place indicator on the 2nd lock position</p> |
|  | <p>4. Release knob ring</p> |
|  | <p>5. Twist installation ring</p> |

CONTROL COMPONENTS

SQUARE LIGHT

TOWER LIGHT

MICRO SWITCH

FOOT SWITCH

LIMIT SWITCH

POWER SWITCH

HOIST SWITCH

CAM SWITCH

BUZZER

PHOTO SENSOR

PROXIMITY SENSOR

FLOATLESS LEVEL SWITCH

TIMER & COUNTER

RELAY

SOCKETS

TERMINAL BLOCK

CONTROL BOX

PID TEMP. CONTROLLER



Technical Information

Switching System

The switching element of KPB25 is equipped with normally open contact and normally closed contact.

Material

Contact

Silver alloy + Copper

Housing

BODY: Nylon glass

CONTACT HOUSING: Nylon glass

Buttons

Acetal

Ring

ABS

Mechanical Characteristics

Mechanical Lifetime

1,000,000 Cycles of operation

Install

Tightening torque : Max. 0.8N • m

Electrical Characteristics

Standards

This product comply with “ Standards for low-voltage switching devices” EN IEC 60947-5-1

Contact Ratings

250VAC 6A (resistive load)

Insulation Resistance

Minimum 100M Ω (500VDC)

Contact Resistance

Maximum 30m Ω

Electrical Lifetime

100,000 cycles of operation



Electrical Characteristics—continues

Dielectric Strength

Between Live Parts: 1,500VAC(50/60Hz) for 1 minute

Between Live and Dead Parts: 1,500VAC(50/60Hz) for 1 minute

Environmental conditions

Operational Temperature

-25° C~+50° C

Operational Humidity

45~85%RH

Protection Degree

IP40 / IP65(“W” type)

Shock Resistance

Approximately 50G(500m/s²)

Vibration Resistance

10~55Hz double amplitude 1.5mm (at X, Y and Z axis)

Approvals

Approbations

UL, CCC, KC

Declaration of Conformity

CE

CONTROL
COMPONENTS

SQUARE
LIGHT

TOWER
LIGHT

MICRO
SWITCH

FOOT
SWITCH

LIMIT
SWITCH

POWER
SWITCH

HOIST
SWITCH

CAM
SWITCH

BUZZER

PHOTO
SENSOR

PROXIMITY
SENSOR

FLOATLESS
LEVEL SWITCH

TIMER &
COUNTER

RELAY

SOCKETS

TERMINAL
BLOCK

CONTROL
BOX

PID TEMP.
CONTROLLER