

**Come viene
creato il codice**
—Coding System

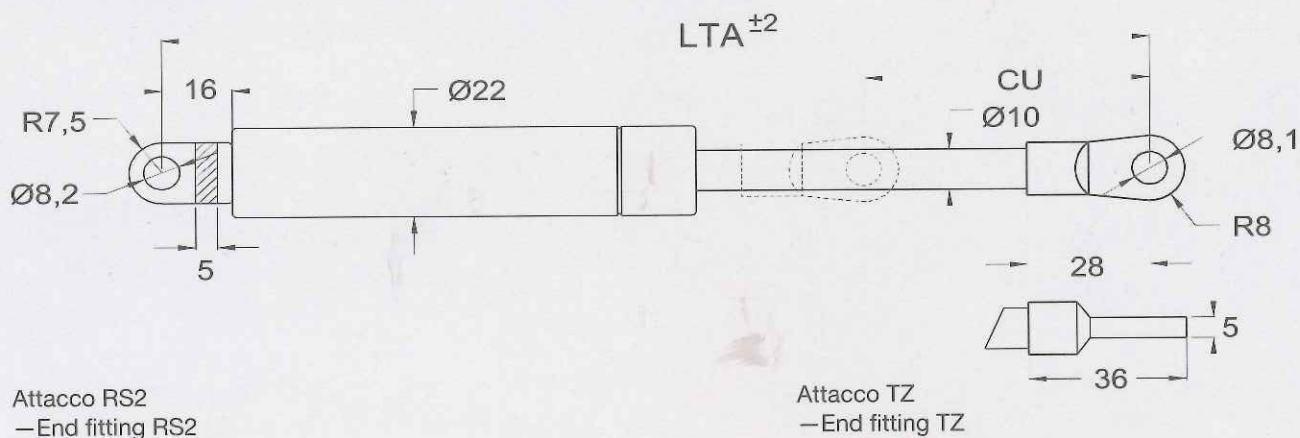
Le molle a gas Vapsint sono caratterizzate da una codifica molto facile ed intuitiva che riporta la famiglia di appartenenza, la misura in tutto aperto (LTA) e gli attacchi (se previsti).

Per la definizione degli attacchi lato corpo e stelo si prega di fare riferimento a quanto specificato nel catalogo attacchi.

—Vapsint gas springs have a very easy and intuitive code that resume the family, the length in fully open position (LTA) and the end fittings (if present).

—For more detailed information on body and rod end-fittings please refer to the "Fittings" catalogue

Codifica —Code	156	6	145	05	RS3 - TZ2
Esempio —Example 156.145.5 RS3 - TZ2	Ø Corpo —Body Ø	Ø Stelo —Rod Ø	Lunghezza tutto aperto (Lta) —Length of fully opened spring (Lta)	Spinta in kg —Thrust in kg	Attacchi corpo / Attacchi stelo —Body end fittings / Rod end fittings

Gamma
molle a gas— Gas springs
product range

**Codici 22 10,
Attacchi RS2/TZ**
— Codes 22 10,
End fittings RS2/TZ

Codice — Code	DC mm	DS mm	Lta min	Cu mm	Kg min	Kg max	Attacco corpo — Body fitting	Attacco stelo — Rod fitting
2210.300.KG. RS2 - TZ	22	10	300	100	10	110	RS2	TZ
2210.350.KG. RS2 - TZ	22	10	350	130	10	110	RS2	TZ
2210.400.KG. RS2 - TZ	22	10	400	150	10	110	RS2	TZ
2210.450.KG. RS2 - TZ	22	10	450	180	10	110	RS2	TZ
2210.500.KG. RS2 - TZ	22	10	500	200	10	110	RS2	TZ
2210.550.KG. RS2 - TZ	22	10	550	230	10	110	RS2	TZ
2210.600.KG. RS2 - TZ	22	10	600	250	10	110	RS2	TZ
2210.650.KG. RS2 - TZ	22	10	650	280	10	110	RS2	TZ
2210.700.KG. RS2 - TZ	22	10	700	300	10	110	RS2	TZ
2210.750.KG. RS2 - TZ	22	10	750	330	10	110	RS2	TZ
2210.800.KG. RS2 - TZ	22	10	800	350	10	110	RS2	TZ
2210.850.KG. RS2 - TZ	22	10	850	380	10	110	RS2	TZ
2210.900.KG. RS2 - TZ	22	10	900	400	10	110	RS2	TZ
2210.950.KG. RS2 - TZ	22	10	950	430	10	110	RS2	TZ
2210.1000.KG. RS2 - TZ	22	10	1000	450	10	110	RS2	TZ

Richiedere la molla a gas specificando la spinta desiderata compresa nell'intervallo espresso.

— When requesting a gas spring, please specify the desired thrust within the given interval (see table).

TS

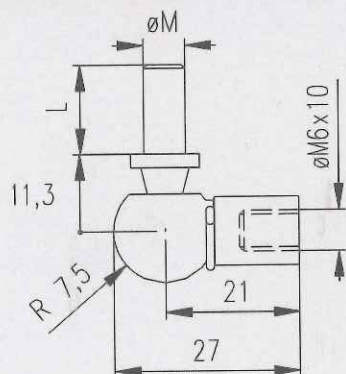
Attacchi
— End fittings

TS 1ACC**DIN 1802 M6**

Snodi SN M 6 / M 8

— Ball studs

SN M 6 / M 8



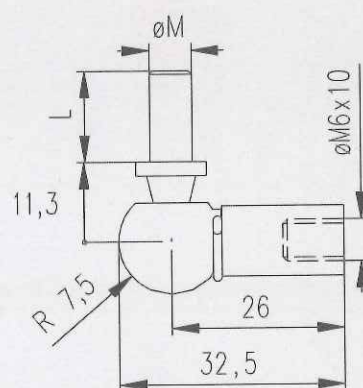
Codice/Code	M	L	Chiave/Wrench
Sn3/9	6	9	8
Sn3	6	13	8
Sn3esa	6	13	10
Sn3/16	6	16	8
Sn1b	8	15	10
Sn1bEsa	8	13	13

TS 1 DIN 1802 M6

Snodi SN M 6 / M 8

— Ball studs

SN M 6 / M 8

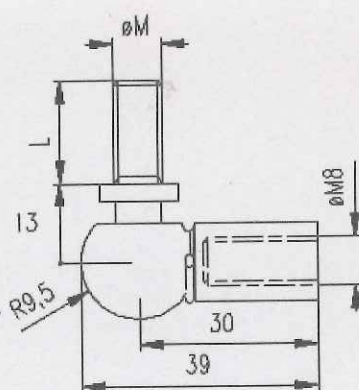


Codice/Code	M	L	Chiave/Wrench
Sn3/9	6	9	8
Sn3	6	13	8
Sn3esa	6	13	10
Sn3/16	6	16	8
Sn1b	8	15	10
Sn1bEsa	8	13	13

TS 2 DIN 1802 M8

Snodi SN M 8

— Ball studs SN M 8

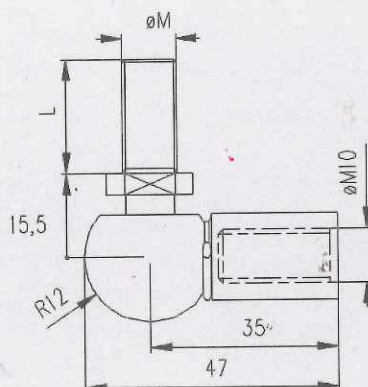


Codice/Code	M	L	Chiave/Wrench
Ts2sn	8	17	10

TS 3 DIN 1802 M10

Snodi SN M 10

— Ball studs SN M 10



Codice/Code	M	L	Chiave/Wrench
Ts2sn	10	20	13