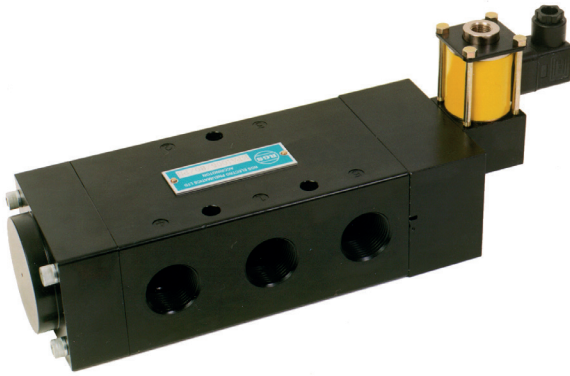
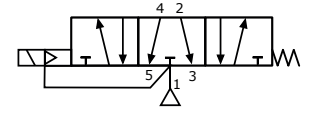
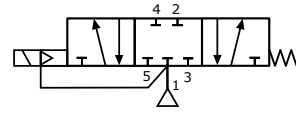
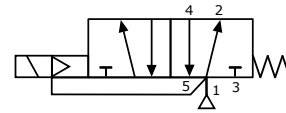


E65--0 Series, 3/4", 5/2 or 5/3 Function Solenoid Valve



DESCRIPTION

Pilot operated solenoid valve.

Hazardous area approved pilot operators (ExnA, Exm, Exme, Exd and Exia) are available with various international approvals – ATEX, IECEx, FM, GOST CU TR (Russia) and NEPSI (China).

Body material available in

- Aluminium (standard)
- Stainless Steel
- Brass

Seal kit available – VSK1001

FEATURES

- Internal or external pilot air connection
- Interchangeable coils, including various hazardous area options
- Single coil spring return function or double coil stay put function
- Convenient fixing holes to enable bracket mounting
- Pilot exhaust dust caps fitted as standard

PRODUCT CODE: E 6 5 **OPERATOR** **0** **COIL** **0** **VOLTAGE** **0** **DESIGNATOR** **0** **OPTIONS 2**

SEE BELOW FOR PRODUCT CODE DETAILS
Any of the below options that are not required enter '0' in relevant box.

Operator

- 1 8** Spring return, internal pilot air feed
- 8 0** Spring return, external pilot air connection
- 1 9** Double solenoid, internal pilot air feed
- 9 0** Double solenoid, external pilot air connection
- 1 4** 5/3 All ports sealed mid position, internal pilot air feed
- 4 0** 5/3 All ports sealed mid position, external pilot air connection
- 1 5** 5/3 Inlet sealed open exhaust mid position, internal pilot air feed
- 5 0** 5/3 Inlet sealed open exhaust mid position, external pilot air connection

Coil

- A** Exia (BASEEFA)
- B** Terminal Box
- D** Exd
- H** Plug & Socket Exia
- K** MC30 Plug & Socket
- L** MC30 Plug & Socket with LED
- N** ExnA
- P** Plug & Socket
- S** Exia (BASEEFA) Stainless Steel Housing
- T** Inline Terminal Box
- U** Exia (FM)
- 0** No Coil Unit
- 9** Exm

Options 1

- C** Lever manual override
- D** Push button manual override
- 1** Tamperproof manual override
- 0** No option required

Standard Voltage

- B** 24v DC
- H** 24v DC Low Power ⁽¹⁾
- R** 24v AC (50/60 Hz)
- T** 110v AC (50/60 Hz)
- N** 220v AC (50/60 Hz)
- U** 240v AC (50/60 Hz)

* A comprehensive range of non-standard voltages available on request

Note:

- (1) "H" option not available with Exia solenoids
- (2) IECEx only available with Exia and Exd Solenoids
- (3) GOST CU TR only available with Exd solenoids
- (4) NEPSI only available with Exia and Exd solenoids

Designator

- A** ATEX
- B** Exia 10mA
- C** IECEx ⁽²⁾
- E** Exme 0.5W
- G** ATEX Exd IIB
- H** Exm
- J** Exme 2.4W
- R** GOST CU TR ⁽³⁾
- X** NEPSI ⁽⁴⁾

Options 2

- B** Valve body brass
- C** Valve body brass and NPT ports
- D** Valve body brass, NPT ports and 1/2" NPT electrical connection
- E** 1/2" NPT electrical connection
- L** Low temperature duty -40°C
- M** NPT ports and 1/2" NPT electrical connection
- N** NPT ports
- P** Valve body stainless steel, NPT ports and 1/2" NPT electrical connection
- R** Valve body stainless steel and NPT ports
- S** Valve body stainless steel
- X** Valve suitable for use with Oxygen

* A comprehensive range of non-standard options available on request

MATERIAL SPECIFICATIONS

STANDARD

Body And End Caps	Black Anodised Aluminium (Dural)
Spool	Hard Anodised Aluminium PTFE Impregnated
Jet	Brass
Spacers	Natural Anodised Aluminium (Dural)
Seals	Nitrile
Spring	High Carbon Steel Alloy

VALVE SPECIFICATIONS

STANDARD

Port Connection Size	3/4" BSP
Working Pressure Internal Pilot Version	3 to 10 bar
Working Pressure External Pilot Version	3 to 10 bar
Minimum External Pilot Pressure	3 bar
Cv Factor	10
Flow Rate (at 6 bar with 1 bar pressure drop)	10384 l/min
Maximum Ambient Temperature	+80 °C
Minimum Working Temperature	-20 °C

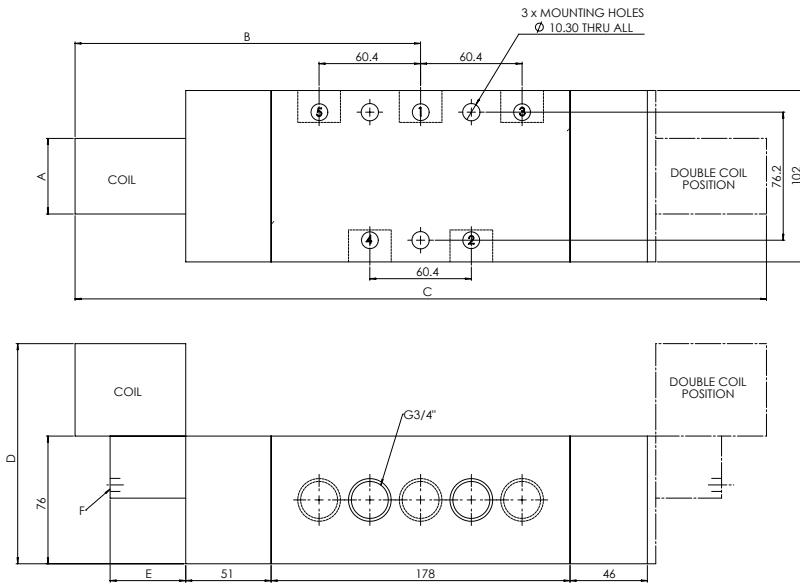
COIL DETAILS

Coil Type	Plug & Socket	Terminal Box	ExnA	Exd	Exm	Exia
Area Class	Safe	Safe	Zone 2	Zones 1 & 2	Zones 1 & 2	Zone 0, 1 & 2
Area Category	N/A	N/A	ExN II T4-T6	Exd IIC T3-T6	Exm IIC T5	Exia IIC T6
Ingress Protection	IP65	IP65	IP65	IP66	IP65	IP65
Cable Entry	PG.9	M20 x 1.5	M20 x 1.5	M20 x 1.5	Flying leads	M20 x 1.5
Ambient Temperature	-20 to +80 °C	-20 to +80 °C	-40 to +60 °C	-60 to +80 °C	-20 to +65 °C	-40 to +65 °C
Magnetic Wire Class	H	H	H	H	H	H

*** FURTHER SOLENOID OPTIONS AVAILABLE ON REQUEST**

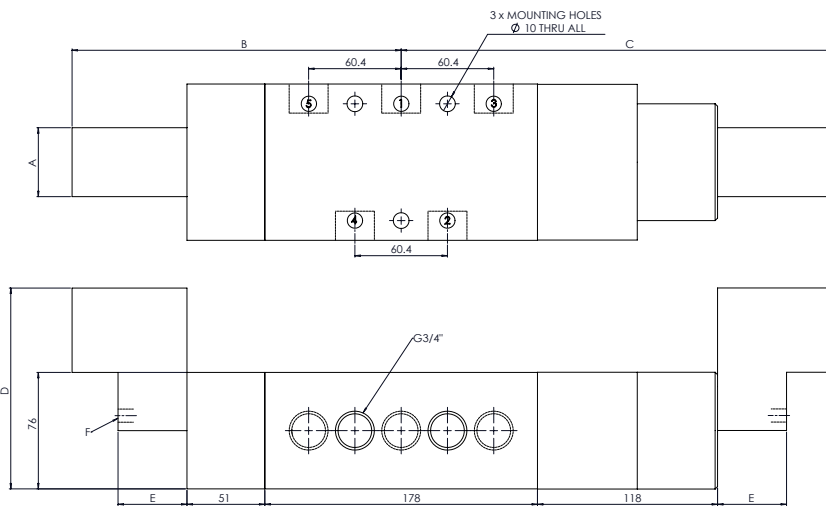
DIMENSIONS (mm)

5/2 Position



COIL TYPE	A	B	C	D	E	F
Plug & Socket	45	215	430	131	45	G 1/4
Terminal Box	35	205	410	131	35	G 1/8
ExnA	35	205	410	131	35	G 1/8
Exd	52	225	450	151	35	G 1/8
Exia	35	205	410	151	35	G 1/8
Exm	35	212	424	131	35	G 1/8

5/3 Position



COIL TYPE	A	B	C	D	E	F
Plug & Socket	45	215	282	131	45	G 1/4
Terminal Box	35	205	272	131	35	G 1/8
ExnA	35	205	272	131	35	G 1/8
Exd	52	225	292	151	35	G 1/8
Exia	35	205	272	151	35	G 1/8
Exm	35	212	279	131	35	G 1/8