

FILTER REGULATORS

FR150, FR300, FR600

- A 5 μ m air filter and a small regulator are combined into a compact body.
- Pressure gauge with preset marker is standard equipment.
- Model for low pressure and model with built-in check mechanism also incorporated into the series.
- Drain cock with fitting, and auto drain type drain cock, are optional.

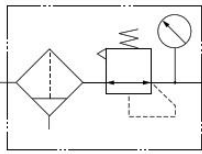


Specifications

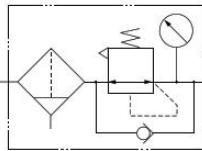
Model	Standard type	FR150	FR300	FR600
	Low pressure type	FR151	FR301	FR601
Item	Built-in check mechanism type	FR152	FR302	FR602
Media	Air			
Port size	Rc	1/8, 1/4	1/4, 3/8	1/4, 3/8, 1/2
Filtration rating	μ m	5		
Pressure setting range	Standard and built-in check mechanism types	0.05~0.83 [7~120]		
	MPa [psi.] Low pressure type	0.05~0.25 [7~36]		
Maximum operating pressure	MPa [psi.]	0.93 [135]		
Proof pressure	MPa [psi.]	1.47 [213]		
Operating temperature range (atmosphere and media)	$^{\circ}$ C [$^{\circ}$ F]	5~60 [41~140]		
Drain capacity	cc [in ³]	15 [0.92]	55 [3.36]	90 [5.49]
Mass (with pressure gauge)	Standard	0.29 [0.62] (0.29 [0.64]) ^{Note 2}	0.46 [1.01]	0.60 [1.32]
	Auto drain type	—	0.49 [1.08]	0.64 [1.41]
Materials	Body	Aluminum die-casting	Zinc die-casting	Aluminum die-casting
	Bowl	Polycarbonate		
Standard attachments	Standard and built-in check mechanism types	Bracket, push type drain cock	Bracket, screw type drain cock, bowl guard	
			Pressure gauge G1-40 (ϕ 40 \times 1MPa [145psi.])	
	Low pressure type	Bracket, push type drain cock	Bracket, screw type drain cock, bowl guard	
			Pressure gauge G3-40 (ϕ 40 \times 0.3MPa [44psi.])	

Note: Figure in parentheses () shows mass with bowl guard.

Symbols

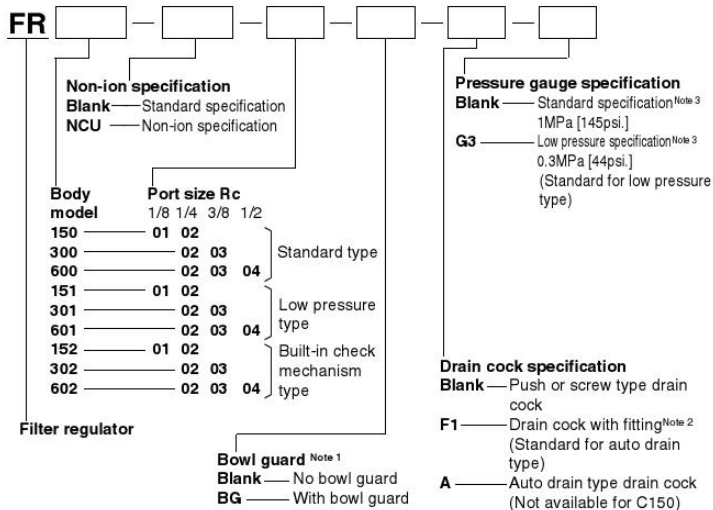


- Standard type
- Low pressure type



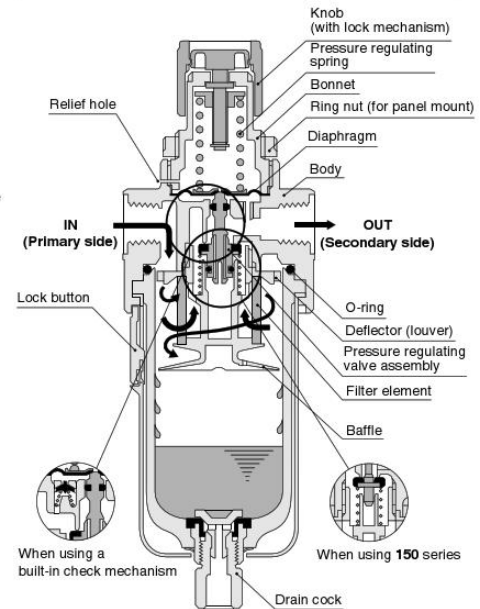
- Built-in check mechanism type

Order Codes



- Notes: 1. For FR150 only. Standard for all models other than FR150.
 2. Available only for FR150 with -BG (bowl guard).
 3. For the specifications and dimensions for the pressure gauge, and pressure gauge with electronic switches, see p.172 and 177~181.

Inner Construction



- Remarks: For the optional drain cock, see p.98.
 For the auto drain type, see p.73.
 For the check mechanism function, see p.74.